

BroadBeam Annual Preventative Maintenance Package

Features

- 50 - point Inspection and Calibration Checklist
- HV Power Supply Oil Analysis (includes \$300 sample kit)
- Dosimetry: Depth Dose and Uniformity (includes \$350 of dosimeters)
- Review / Establish Safety Check Records
- 1-day of On-Site Maintenance Training up to 4 people (includes \$360 in student manuals)
- Spare Part Checklist
- 12 Months of 24-Hour Hot Line Support
- Summary Report with Recommendations, sent one week after visit

Based on a Monday – Friday; 5-day travel and work schedule, 10-hour work days. Travel and lodging expenses are billed at cost.

Price: \$7,800

Option: Add one day for Operator and Safety Training: \$1,400

Based on a Friday – Tuesday, 5-day travel and work schedule, 10-hour work days. Travel and lodging expenses are billed at cost.

Price: \$9,800

Option: Add one day Operator and Safety Training: \$1,400



BroadBeam Calibration Package

Features

- 50 - point Calibration Checklist
- Spare Part Checklist
- 12 Months of 24 Hour Hot Line Support
- Summary Report with Recommendations, sent one week after visit.



Based on a Monday – Thursday, 4-day travel and work schedule, 10-hour work days. Travel and lodging expenses are billed at cost.

Price: \$4,900

Based on a Friday – Monday, 4-day travel and work schedule, 10-hour work days. Travel and lodging expenses are billed at cost.

Price: \$6,900



BroadBeam Inspection and Calibration Checklist

Record Machine Hours
 Foil Change History
 Vacuum Gage Readings
 Cryopump and Vacuum Pump Condition and Settings

- Degas Ion Gage
- Check Filters and Oil
- Helium Pressure
- Cryo Temperature Trends

SF6 Pressures and Condition

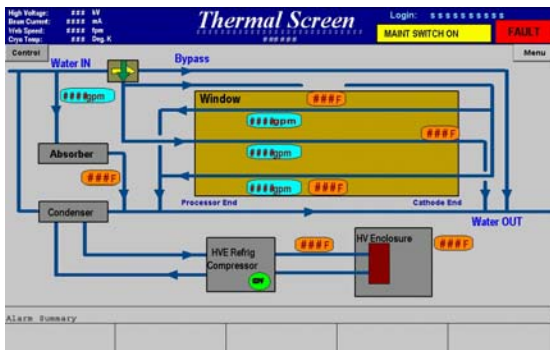
Air Pressure and Quality

N2 Pressure and Usage (if applicable)

- Knife Condition and Adjustment
- Flood Zone Distribution and Cleanliness
- Condition of Seals
- Condition of Filters

Ozone System (if applicable)

- Inspect Blower and rubber boots
- Measure blower current and pressure



Water Pressure and Flow

- Copper Window
- Beam Absorber / Chill Roll
- Refrigeration Unit
- Water Quality, Filtering

HV Power Supply Inspection

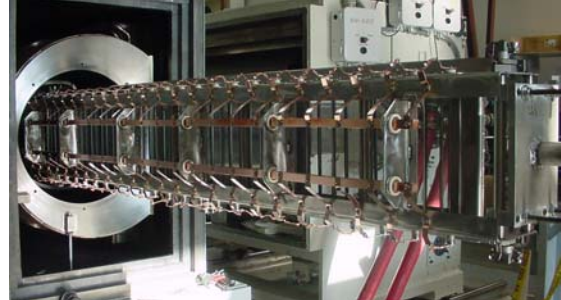
- Bushings and Cable
- N2 Padding Pressure
- Oil Sample

Machine Inspection

- Panel Filters and Fans
- DC Power Supply Voltages and Ripple
- Wire and Pipe Labeling and Routing
- Shielding Condition
- Refrigeration Unit

Fault Check

- Interlock Check
- Radiation Monitor Calibrate and Check
- A, B and C Fault Set Point Check
- Review Interlock Check Logbook



Performance and Calibration

- Filament
- Grid
- High Voltage
- Beam Current Monitor
- Dose Rate
- High Voltage Ripple

Vacuum Rate of Rise

Filament Current

Dose to Beam Current

Dose to Grid Voltage

Dose to Grid Current

Spare Parts Inventory

Informative Radiation Survey

Depth Dose Dosimetry

Beam Uniformity Dosimetry



PCT

Engineered Systems, LLC

The Solutions Team

8700 Hillendale Road
 Davenport, IA 52806
 563.285.7411
 FAX 563.285.7433
www.teampct.com

